



MAXX BUILDERS

8

THE ULTIMATE GUIDE TO

COMMERCIAL CONSTRUCTION PLANNING

A COMPREHENSIVE HANDBOOK FOR MAXX
BUILDERS' CLIENTS

WWW.MAXXBUILDERS.COM

INTRODUCTION

Congratulations on choosing **Maxx Builders**, your trusted partner in commercial construction projects! This e-book has been specifically crafted to guide you through the essential steps of commercial construction planning. Whether you're embarking on a new construction project or renovating an existing space, this comprehensive guide will provide you with the knowledge and tools necessary to ensure a successful outcome.



TABLE OF CONTENTS

Chapter 1: Understanding the Commercial Construction Process

- 1.1. Overview of Commercial Construction
- 1.2. Importance of Proper Planning
- 1.3. Role of Maxx Builders in the Planning Phase

Chapter 2: Defining Project Goals and Objectives

- 2.1. Identifying Your Vision
- 2.2. Setting Realistic Expectations
- 2.3. Establishing Clear Project Goals

Chapter 3: Budgeting and Financing

- 3.1. Estimating Construction Costs
- 3.2. Financing Options and Considerations
- 3.3. Collaborating with Maxx Builders to Optimize Budget Allocation

Chapter 4: Site Selection and Evaluation

- 4.1. Identifying the Ideal Location
- 4.2. Evaluating Site Suitability
- 4.3. Understanding Zoning Regulations and Permits

Chapter 5: Architectural Planning and Collaboration with Maxx Designers

- 5.1. Collaborating with Architects and Designers
- 5.2. Developing a Design Concept
- 5.3. Achieving a Cohesive Architectural Design with Maxx Designers

Chapter 6: Pre-Construction Documentation and Approvals

- 6.1. Procuring Permits and Licenses
- 6.2. Preparing Detailed Construction Documents
- 6.3. Ensuring Compliance with Building Codes and Regulations

Chapter 7: Procurement and Material Selection

- 7.1. Identifying the Right Materials and Suppliers
- 7.2. Managing the Procurement Process
- 7.3. Quality Control and Material Testing

Chapter 8: Construction Scheduling and Project Management

- 8.1. Creating a Realistic Construction Schedule
- 8.2. Managing Project Milestones and Deadlines
- 8.3. Collaborating with Maxx Builders' Project Managers

Chapter 9: Safety and Risk Management

- 9.1. Implementing Effective Safety Protocols
- 9.2. Identifying and Mitigating Construction Risks
- 9.3. Ensuring Compliance with Occupational Health and Safety Regulations

Chapter 10: Communication and Collaboration

- 10.1. Effective Communication Channels
- 10.2. Regular Project Updates and Meetings
- 10.3. Building Strong Relationships with Maxx Builders' Team

Chapter 11: Post-Construction Evaluation and Maintenance

- 11.1. Conducting a Final Inspection
- 11.2. Addressing Deficiencies and Warranty Issues
- 11.3. Implementing an Ongoing Maintenance Plan

Note: This e-book is a general guide and should be used for informational purposes only. Consultation with Maxx Builders' team and other relevant professionals is highly recommended for your specific commercial construction project needs.

CHAPTER 1

CHAPTER 1

UNDERSTANDING THE COMMERCIAL CONSTRUCTION PROCESS



MAXX BUILDERS



1.1 OVERVIEW OF COMMERCIAL CONSTRUCTION

Introduction:

Commercial construction is a dynamic and multifaceted process that involves the creation, renovation, or expansion of commercial buildings. In this chapter, we will provide an in-depth overview of commercial construction, exploring its various aspects, stages, and considerations. By understanding the fundamentals, you will gain insights into the complexity and unique considerations involved in commercial construction projects.

The Scope of Commercial Construction:

Commercial construction encompasses a wide range of projects, from small office spaces to large shopping malls and skyscrapers. These projects serve diverse industries such as healthcare, hospitality, retail, and education. The scale and complexity of commercial construction often require specialized knowledge and expertise to ensure successful outcomes.

In commercial construction, the focus goes beyond creating functional spaces. It involves designing structures that are visually appealing, environmentally sustainable, and compliant with safety regulations. The architectural design must meet the unique requirements of the business or industry it serves.

Key Elements of Commercial Construction:

Commercial construction projects involve several key elements that need to be carefully managed. These include architectural design, engineering, procurement, construction management, and quality control. Each element contributes to the overall success of the project and requires effective coordination and collaboration among various stakeholders.

The architectural design sets the foundation for the project. It encompasses conceptualization, space planning, exterior aesthetics, and interior layout. The design should align with the client's vision, functional requirements, and budget constraints.

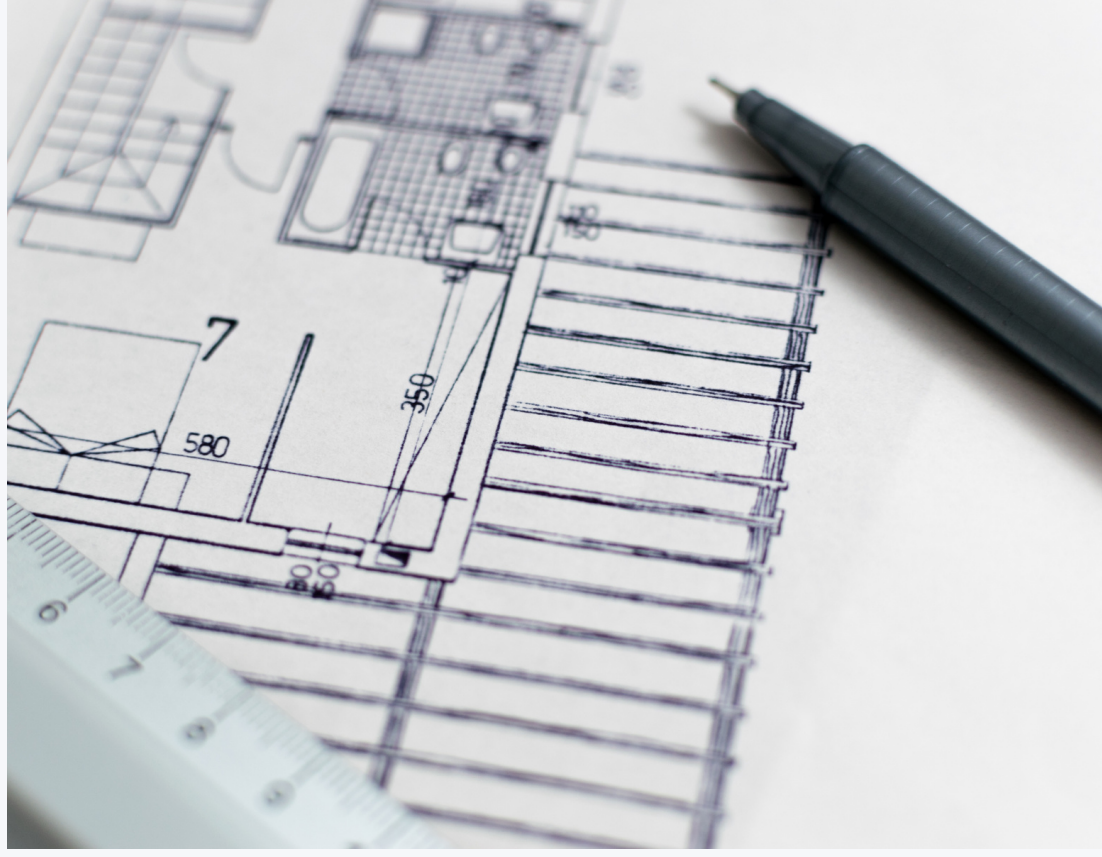
Engineering plays a crucial role in commercial construction, ensuring structural integrity, electrical systems, plumbing, HVAC, and other essential components are properly designed and implemented. Engineers collaborate with architects to translate design concepts into viable and safe structures.

Procurement involves sourcing and acquiring the necessary materials, equipment, and services for the project. Effective procurement strategies ensure timely delivery, cost control, and adherence to quality standards.

Construction management oversees the execution of the project, including scheduling, resource allocation, and coordination of subcontractors. Project managers ensure that construction activities progress smoothly, timelines are met, and quality standards are upheld.

Quality control ensures that the construction adheres to specified standards and meets client expectations. It involves regular inspections, testing, and verification to identify and rectify any issues that may arise during the construction process.

Unique Considerations in Commercial Construction:



Size and Scale:

Commercial construction projects are typically larger in scale compared to residential projects. The scope of work may involve constructing multiple floors, extensive infrastructure, and complex systems. These projects require meticulous planning and coordination to ensure smooth execution.



Building Codes and Regulations:

Compliance with building codes and regulations is essential in commercial construction. Local, regional, and national codes govern aspects such as structural integrity, fire safety, accessibility, and energy efficiency. Understanding and adhering to these codes is crucial to meet legal requirements and ensure the safety of occupants.



Project Management:

Commercial construction projects require effective project management to ensure timely completion and adherence to budget constraints. Project managers oversee scheduling, procurement, resource allocation, and coordination among various teams. Their role is crucial in maintaining project progress and resolving any issues that may arise.



Environmental Considerations:

Sustainability is becoming increasingly important in commercial construction. Projects are expected to incorporate energy-efficient systems, renewable materials, and environmentally friendly practices. Green building certifications, such as LEED (Leadership in Energy and Environmental Design), are sought after to demonstrate a commitment to sustainability.

1.2

1.2 IMPORTANCE OF PROPER PLANNING

Introduction:

Proper planning is the cornerstone of a successful commercial construction project. In this section, we will emphasize the significance of investing time and effort in the planning phase. Effective planning sets the foundation for a well-executed project, minimizing risks, optimizing resource allocation, and ensuring efficient project management.

Minimizing Risks:

Thorough planning helps identify potential risks and challenges that may arise during the construction process. By conducting thorough feasibility studies, risk assessments, and cost analyses, you can anticipate and mitigate potential issues. Proactive risk management strategies can save time, money, and resources in the long run.

In the planning phase, it is essential to identify any potential obstacles, such as site limitations, regulatory hurdles, or budget constraints. By addressing these challenges upfront, you can develop strategies to overcome them and minimize their impact on the project.

Optimizing Resource Allocation:

Planning enables the efficient allocation of resources, including materials, labor, and equipment. By accurately estimating project requirements and timelines, you can avoid delays, reduce costs, and optimize productivity. Effective resource allocation ensures that the project progresses smoothly, avoiding bottlenecks and minimizing disruptions.

During the planning phase, careful consideration should be given to material selection, procurement strategies, and subcontractor management. Optimizing resource allocation can lead to cost savings and ensure the availability of necessary resources at the right time.

Ensuring Efficient Project Management:

Proper planning establishes a roadmap for project management, allowing for effective coordination, communication, and decision-making. It helps define project objectives, set realistic timelines, and allocate responsibilities. With a well-defined plan, project managers can ensure smooth execution, timely completion, and effective utilization of available resources.

In the planning phase, project managers work closely with stakeholders to identify critical milestones, establish a project schedule, and allocate resources accordingly. They coordinate with subcontractors, suppliers, and other team members to ensure that everyone is aligned with the project plan.

Conclusion:

Understanding the commercial construction process is crucial for successful project planning.

By grasping the overview of commercial construction, recognizing the importance of proper planning, and understanding the role of Maxx Builders in the planning phase, you are better equipped to navigate the complexities of your project. In the subsequent chapters, we will delve deeper into the specific steps and considerations involved in commercial construction planning.



1.3

1.3 ROLE OF MAXX BUILDERS IN THE PLANNING PHASE

Introduction:

Maxx Builders plays a crucial role in the planning phase of your commercial construction project. Their expertise, experience, and collaborative approach are invaluable in ensuring that your project is well-executed and aligned with your vision. In this section, we will explore the specific role that Maxx Builders plays in the planning process and how their involvement enhances the overall success of your project.

Understanding Your Vision:

Maxx Builders begins by closely collaborating with you to understand your vision for the project. They will take the time to listen to your needs, goals, and desired outcomes. By actively engaging in discussions and asking pertinent questions, Maxx Builders ensures that they have a clear understanding of your vision. This understanding serves as the foundation for developing a comprehensive plan that aligns with your objectives.

Feasibility Studies and Site Analysis:

During the planning phase, Maxx Builders conducts feasibility studies and site analyses to assess the viability and potential challenges associated with your project. They will evaluate factors such as site conditions, local regulations, zoning restrictions, and environmental considerations. These studies provide crucial insights into the feasibility of your project and help identify potential obstacles that may need to be addressed.

Maxx Builders' expertise allows them to navigate potential challenges effectively. They will provide you with recommendations and alternatives to overcome any obstacles, ensuring that your project can move forward smoothly.

Collaboration with Architects and Designers:

Maxx Builders collaborates closely with architects and designers throughout the planning phase. They act as a bridge between you and the design team, facilitating effective communication and ensuring that your vision is translated accurately into the design concepts.

Through this collaboration, Maxx Builders brings their construction expertise to the table, offering insights into the practicality, feasibility, and cost implications of various design options. They provide valuable input on construction materials, building systems, and construction techniques to optimize the design for efficiency and long-term value.

Cost Estimation and Value Engineering:

Maxx Builders excels in cost estimation and value engineering, which are vital aspects of the planning phase. They leverage their experience and knowledge of construction costs to provide accurate and detailed estimates for your project. By considering various factors, such as materials, labor, subcontractor costs, and market trends, they help you establish a realistic budget for your project.

Value engineering is another area where Maxx Builders adds significant value. They identify opportunities to enhance the value and efficiency of your project while controlling costs. Through careful analysis and innovative problem-solving, they suggest alternatives that achieve your goals at a more cost-effective level.

Project Timeline and Scheduling:

Maxx Builders works closely with you to develop a realistic project timeline and construction schedule. They take into account all the necessary steps, from obtaining permits and approvals to procurement, construction, and final inspections. Their experience in project management allows them to create a timeline that is both achievable and efficient.

During the planning phase, Maxx Builders will collaborate with you to identify critical milestones and establish a timeline that aligns with your project goals. They will ensure that the timeline accounts for potential delays mitigates risks, and allows for effective coordination among all stakeholders.

Regulatory Compliance:

Navigating the complex landscape of regulations, permits, and approvals is a crucial part of the planning phase. Maxx Builders has a deep understanding of local building codes, zoning regulations, and other regulatory requirements. They will guide you through the process, ensuring that your project meets all necessary compliance standards.

Maxx Builders will work closely with local authorities and regulatory bodies to obtain the required permits and approvals. Their knowledge and expertise in navigating these processes help streamline the planning phase, reducing potential delays and ensuring a smooth progression into the construction phase.

Conclusion:

Maxx Builders' involvement in the planning phase of your commercial construction project is instrumental in its success.

Their role as your trusted partner encompasses understanding your vision, conducting feasibility studies, collaborating with architects and designers, providing cost estimation and value engineering, establishing project timelines, and ensuring regulatory compliance.

By leveraging their expertise and experience, Maxx Builders optimizes the planning phase, setting the stage for a well-executed project that aligns with your vision, meets your goals, and delivers long-term value. In the following chapters, we will explore other essential aspects of commercial construction planning, such as budgeting, site selection, and design planning, enabling you to navigate the process with confidence and maximize the potential of your project.



CHAPTER 2

CHAPTER 2

DEFINING PROJECT GOALS & OBJECTIVES



MAXX BUILDERS

2.1

2.1 IDENTIFYING YOUR VISION

Introduction:

In order to embark on a successful commercial construction project, it is crucial to clearly identify and articulate your vision. Your vision serves as the guiding force that drives the project, aligns stakeholders, and sets the direction for the entire planning and execution process. In this section, we will explore the steps to effectively identify your vision and ensure that it accurately represents your goals and aspirations.

Understanding Your Needs and Objectives:

The first step in identifying your vision is to gain a deep understanding of your needs and objectives for the project. Consider the purpose of the commercial space, the target audience or users, and the desired functionality. Are you aiming to create a state-of-the-art office environment, a cutting-edge retail space, or a sustainable healthcare facility? Understanding these elements will help shape your vision and set the stage for a successful project.

Engage in thorough discussions with key stakeholders within your organization to gather insights and perspectives. Consider their input on factors such as brand identity, customer experience, operational efficiency, and future growth potential. This collaborative approach will ensure that your vision incorporates the diverse perspectives and priorities of all relevant parties.

Collaborating with Maxx Builders:

Maxx Builders, as your trusted partner in commercial construction, plays a vital role in helping you identify and refine your vision. They have extensive experience and expertise in the industry, allowing them to provide valuable insights and guidance. Collaborate closely with Maxx Builders to align your vision with their knowledge and capabilities, ensuring a harmonious partnership throughout the project.

Maxx Builders will actively listen to your needs and goals, asking pertinent questions to gain a deeper understanding of your vision. They will leverage their industry knowledge to provide recommendations and suggestions that align with your objectives. This collaborative approach ensures that your vision is accurately interpreted and translated into a well-defined plan.

2.2

2.2 SETTING REALISTIC EXPECTATIONS

Introduction:

Setting realistic expectations is crucial for the success of any commercial construction project. Unrealistic expectations can lead to frustration, delays, and cost overruns. In this section, we will explore the factors to consider when setting expectations and how to strike a balance between ambitious aspirations and practical realities.

Understanding Project Constraints:

Before setting expectations, it is important to understand the constraints of your project. Consider factors such as budget limitations, regulatory requirements, and time constraints. Realistic expectations take into account these constraints while still aiming for a successful outcome. Maxx Builders can provide valuable insights into these constraints and help you navigate them effectively.

Collaboration with Maxx Builders:

Maxx Builders' expertise and experience are instrumental in setting realistic expectations. They bring a deep understanding of commercial construction projects and can offer valuable guidance. Collaborate closely with Maxx Builders to align your expectations with the project's feasibility, budget, and timeline.

Communication and Transparency:

Clear communication and transparency are essential in setting and managing expectations. Openly discuss your goals, priorities, and limitations with Maxx Builders. Maintain ongoing communication throughout the project to address any changes or challenges that may arise. Effective communication ensures that all parties are aligned and working towards the same objectives.

Flexibility and Adaptability:

While it is important to set realistic expectations, it is also crucial to remain flexible and adaptable. Construction projects can encounter unforeseen challenges or opportunities for improvement along the way. By maintaining a flexible mindset and collaborating closely with Maxx Builders, you can adjust your expectations when necessary and make informed decisions that support the overall success of the project.

Maxx Builders' Role in Managing Expectations:

Maxx Builders plays a pivotal role in managing expectations throughout the planning phase. They provide expert guidance, drawing on their extensive experience in commercial construction projects. They will help you understand the feasibility of your expectations, provide alternatives or suggestions when necessary, and guide you in making informed decisions.

Conclusion:

Defining project goals and objectives is a critical step in the commercial construction planning process.

By effectively identifying your vision, setting realistic expectations, and establishing clear project goals, you lay the foundation for a successful collaboration with Maxx Builders. Their expertise and collaborative approach ensure that your vision is aligned with the project's feasibility, budget, and timeline. In the following chapters, we will delve into other essential aspects of commercial construction planning, such as budgeting, site selection, and design planning, to further enhance the success of your project.



2.3

2.3 ESTABLISHING CLEAR PROJECT GOALS

Introduction:

Establishing clear project goals is essential for a successful commercial construction project. Clear goals provide a roadmap, align stakeholders, and serve as a benchmark for progress and success. In this section, we will explore the steps involved in establishing clear project goals and how they contribute to the overall planning and execution process.

Identifying Key Objectives:

The first step in establishing clear project goals is to identify the key objectives you want to achieve. Consider the specific outcomes and deliverables that will define success for your commercial construction project. These objectives could include enhancing customer experience, increasing operational efficiency, improving sustainability, or achieving specific design aesthetics.

Engage in discussions with your team, stakeholders, and Maxx Builders to gain insights and perspectives. Consider their input on the objectives and ensure alignment with your organization's overall strategic goals. Through collaborative discussions, you can identify and prioritize the key objectives that will drive the success of your project.

Setting Measurable and Realistic Goals:

Once you have identified your key objectives, it is important to transform them into specific, measurable, achievable, relevant, and time-bound (SMART) goals. SMART goals provide clarity, enable effective tracking of progress, and ensure that the goals are realistic and achievable within the project's parameters.

For each objective, define specific metrics or criteria by which success will be measured. This could include factors such as cost savings, energy efficiency improvements, customer satisfaction ratings, or compliance with sustainability standards. By setting measurable goals, you can track progress and make data-driven decisions throughout the project.

Prioritizing Goals:

In a commercial construction project, there may be multiple goals to address. It is important to prioritize these goals based on their importance, impact on the overall project, and available resources. By identifying primary and secondary goals, you can ensure that the project team focuses their efforts and resources accordingly.

Collaborate with Maxx Builders to evaluate the feasibility and impact of each goal. Their expertise and industry knowledge will help you assess the practicality of each goal within the project's budget, schedule, and constraints. Maxx Builders can provide valuable insights on trade-offs, alternatives, and best practices to help you prioritize goals effectively.

Establishing Alignment and Buy-In:

Clear project goals require alignment and buy-in from all stakeholders involved in the project. Engage in open and transparent communication with Maxx Builders, your team, and relevant stakeholders to ensure that everyone understands and supports the established goals. Clear communication fosters a shared sense of purpose and commitment to the project's success.

Regularly communicate the established goals to all project participants and provide updates on progress. This ensures that everyone remains focused on the objectives and can make informed decisions that align with the project goals. Maxx Builders can play a vital role in facilitating effective communication and ensuring alignment among all stakeholders.

Revisiting and Adjusting Goals:

Throughout the planning phase and the project's lifecycle, it is important to revisit and adjust goals as necessary. Construction projects are dynamic, and unforeseen circumstances or changes in requirements may require adaptations to the original goals. Regularly assess progress, evaluate the feasibility of goals, and adjust them if needed to keep the project on track.

Collaborate closely with Maxx Builders to assess the impact of any goal adjustments. Their expertise and experience will help you evaluate the implications of changes and make informed decisions. Through open and transparent communication, ensure that all stakeholders are informed about any goal adjustments and understand the reasons behind them.



Conclusion:

Establishing clear project goals is a critical step in commercial construction planning.

By identifying key objectives, setting measurable and realistic goals, prioritizing objectives, and ensuring alignment among stakeholders, you provide a solid foundation for the project's success. Collaborating with Maxx Builders throughout the process allows you to leverage their expertise, ensuring that your goals align with the project's feasibility and industry best practices. In the next chapters, we will explore other crucial aspects of commercial construction planning, including budgeting, site selection, and design planning, further enhancing the potential of your project.

CHAPTER 3

CHAPTER 3

BUDGETING & FINANCING



MAXX BUILDERS

3.1

3.1 ESTIMATING CONSTRUCTION COSTS INTRODUCTION

Accurately estimating construction costs is a critical step in commercial construction planning. It allows you to develop a realistic budget, make informed financial decisions, and ensure the successful execution of your project. In this section, we will explore the process of estimating construction costs, key factors to consider, and how Maxx Builders can assist you in optimizing your budget allocation.

Understanding Cost Components:

Construction costs encompass various components that need to be considered when estimating expenses. These components typically include materials, labor, equipment, permits, subcontractor fees, and indirect expenses. Understanding each cost component is essential to ensure an accurate estimation. Maxx Builders, with their expertise and industry knowledge, can provide valuable insights into industry-standard cost data and help you navigate the complexities of cost estimation.

Quantity Takeoffs:

One of the key steps in estimating construction costs is performing quantity takeoffs. This process involves quantifying the amount of materials, labor hours, and equipment required for each aspect of the project. Maxx Builders' experienced team can assist you in performing accurate quantity takeoffs based on the project's design and specifications. They can collaborate with architects, engineers, and subcontractors to gather the necessary information and provide a comprehensive estimation.

Obtaining Subcontractor and Supplier Quotes:

To ensure accurate cost estimates, it is crucial to gather quotes from subcontractors and suppliers. Maxx Builders, with its established network of reliable subcontractors and suppliers, can help facilitate this process. They have established relationships and can leverage their industry connections to obtain competitive quotes. Collaborating with Maxx Builders ensures comprehensive coverage of all project components and allows for a thorough analysis of quotes to identify potential cost-saving opportunities.

Contingency Planning:

Construction projects often encounter unforeseen circumstances or changes during the execution phase. It is essential to include contingency provisions in your budget to account for these potential risks. Collaborate with Maxx Builders to determine an appropriate contingency amount based on industry standards and the specific complexities of your project. Their experience allows them to assess potential risks and develop contingency plans to mitigate the financial impact of unexpected events, ensuring a more accurate budget.

3.2

3.2 FINANCING OPTIONS & CONSIDERATIONS

Introduction:

Securing appropriate financing is a vital aspect of commercial construction planning. It ensures that you have the necessary capital to fund your project and successfully execute it. In this section, we will explore various financing options and considerations to help you make informed decisions regarding the financial aspects of your construction project.

Traditional Financing:

Traditional financing options include bank loans, lines of credit, and mortgages. These options require thorough financial documentation, creditworthiness, and collateral. Collaborate with financial institutions to explore traditional financing options and determine the best fit for your project. Maxx Builders can provide insights into the specific requirements and help you navigate the process, ensuring a seamless financing experience.

Alternative Financing:

In recent years, alternative financing options have gained popularity in the construction industry. These options include crowdfunding, private equity, and public-private partnerships. They offer flexibility and access to additional capital sources beyond traditional financing methods. Collaborate with Maxx Builders to explore alternative financing options and assess their suitability for your project. Their expertise and industry connections can help you navigate the complexities of these financing avenues and identify the best approach for your specific needs.

Budget Allocation and Optimization:

Once you have secured financing, it is crucial to allocate your budget effectively and optimize its utilization. Collaborate closely with Maxx Builders to review the cost estimates and identify areas where cost savings can be achieved without compromising the project's quality or objectives. Maxx Builders' experience and expertise allow them to suggest value engineering options and alternative solutions that align with your budget. Their understanding of construction costs, materials, and labor ensures that your budget is optimized for maximum value and efficiency.

Regular Cost Tracking and Monitoring:

Throughout the construction process, it is essential to track and monitor costs regularly to ensure they remain within the allocated budget. Collaborate with Maxx Builders to implement effective cost tracking systems and reporting mechanisms. Regular cost updates and analysis will help you make informed decisions, address any budgetary concerns promptly, and maintain financial control throughout the construction process. Maxx Builders can provide you with detailed cost reports and insights, allowing you to track progress and make adjustments as needed.

Conclusion:

In this chapter, we explored the critical topics of estimating construction costs and financing options in commercial construction planning.

Accurately estimating costs and securing appropriate financing is essential for successful project execution. Collaborating with Maxx Builders throughout the process allows you to leverage their expertise, industry connections, and financial insights to optimize your budget allocation and ensure a well-planned and financially sound project. In the following chapters, we will delve into other crucial aspects of commercial construction planning, such as site selection, architectural design, and pre-construction documentation, further enhancing the potential of your project.



CHAPTER 4

CHAPTER 4

SITE SELECTION & EVALUATION



MAXX BUILDERS

4.1

4.1 IDENTIFYING THE IDEAL LOCATION

Introduction

Selecting the right location for your commercial construction project is a critical decision that can significantly impact its success. The location of your project determines factors such as accessibility, visibility, market reach, and overall suitability for your business goals. In this chapter, we will delve into the process of identifying the ideal location for your commercial construction project and how Maxx Builders can assist you in making informed site selection decisions.

Understanding Your Business Needs:

Before diving into the site selection process, it is important to have a clear understanding of your business needs and requirements. Consider factors such as target market demographics, proximity to suppliers and customers, transportation infrastructure, zoning regulations, and potential expansion opportunities. This information will serve as a foundation for finding an ideal location that aligns with your business goals.

Collaboration with Maxx Builders:

Maxx Builders plays a crucial role in the site selection process. With their extensive experience and expertise in commercial construction projects, they can provide valuable insights and guidance. Collaborate closely with Maxx Builders to communicate your business needs and objectives. They can leverage their knowledge to analyze potential sites and assess their suitability for your project.

Maxx Builders will consider various factors such as local market conditions, site accessibility, zoning regulations, and infrastructure availability to help you make informed decisions. Their understanding of the construction process ensures that site selection is evaluated not only from a business perspective but also from a construction feasibility standpoint.

Market Research and Analysis

Conducting thorough market research and analysis is essential in identifying the ideal location for your commercial construction project. Maxx Builders can assist you in gathering market data, analyzing trends, and evaluating potential sites based on market demand and competition. Understanding the local market dynamics and consumer behavior will help you choose a location that maximizes the potential for business success.

Site Suitability Evaluation

Once potential sites have been identified, a comprehensive evaluation of site suitability is necessary. This evaluation includes factors such as site size, topography, soil conditions, environmental considerations, and infrastructure availability. Maxx Builders can conduct site inspections and collaborate with engineers, architects, and environmental consultants to assess these factors and provide valuable insights.

They will evaluate the site's compatibility with your project's specific requirements, such as building size, parking capacity, and outdoor space. By considering these factors, Maxx Builders can help you make an informed decision regarding the suitability of each potential location.

Zoning Regulations and Permits:

Understanding zoning regulations and obtaining the necessary permits are vital aspects of site selection. Maxx Builders' expertise in navigating local regulations and permitting processes ensures compliance with zoning requirements. Collaborate with Maxx Builders to review zoning restrictions, assess their impact on your project, and obtain the required permits efficiently.

They will guide you through the permitting process, ensuring that all necessary documentation is completed accurately and submitted in a timely manner. By partnering with Maxx Builders, you can navigate the regulatory landscape with confidence and ensure that your project complies with all applicable regulations.

Accessibility and Connectivity

The accessibility and connectivity of a site are crucial considerations for a commercial construction project. Evaluate transportation infrastructure, proximity to major roads, public transportation availability, and parking facilities. Maxx Builders can assist you in assessing these factors and ensuring that the selected site offers convenient access for customers, employees, and suppliers.

They will analyze the site's proximity to major transportation hubs and assess its connectivity to key areas of interest. By considering these factors, Maxx Builders can help you choose a location that enhances accessibility and contributes to the overall success of your project.

Future Growth Potential

Consider the potential for future growth and expansion when selecting a site. Analyze the surrounding area for potential developments, demographic changes, and economic growth projections. Maxx Builders can provide insights into the long-term viability of the location and help you make informed decisions that align with your business growth strategy.

By evaluating the growth potential, you can choose a location that not only meets your current needs but also offers opportunities for future expansion and market reach. Maxx Builders' experience and knowledge of market trends can assist you in making strategic decisions that support your long-term business goals.

Conclusion:

Accurately estimating costs and securing appropriate financing are essential for successful project execution.

Collaborating with Maxx Builders throughout the process allows you to leverage their expertise, industry connections, and financial insights to optimize your budget allocation and ensure a well-planned and financially sound project. In the following chapters, we will delve into other crucial aspects of commercial construction planning, such as site selection, architectural design, and pre-construction documentation, further enhancing the potential of your project.



CHAPTER 5

CHAPTER 5

ARCHITECTURAL PLANNING & COLLABORATION WITH MAXX DESIGNERS



MAXX BUILDERS

5.1

5.1 COLLABORATING WITH MAXX DESIGNERS

Introduction

Maxx Designers, as a trusted partner company of Maxx Builders, brings forth a wealth of architectural engineering expertise tailored to your specific project requirements. Collaborating with Maxx Designers allows for a cohesive integration of architectural design and engineering principles, ensuring the realization of your vision while adhering to functional and regulatory considerations.

Comprehensive Architectural Engineering Services

Maxx Designers offers a wide array of architectural engineering services, including architectural design, structural engineering, mechanical and electrical engineering, and construction administration. Their multidisciplinary approach ensures seamless coordination among various design disciplines, resulting in a harmonious and efficient construction process.

Collaborative Design Process

Effective collaboration between you, Maxx Builders, and Maxx Designers is paramount to ensuring that the architectural design aligns with your vision and project requirements. Through open communication and shared goals, you actively participate in the design process, providing valuable input and feedback to shape the architectural concept. This collaborative approach ensures the translation of your vision into a functional and aesthetically pleasing commercial space.

Integration of Aesthetics and Functionality

Maxx Designers understand the importance of balancing aesthetics and functionality in commercial construction. They strive to create designs that not only showcase your brand identity and capture the desired aesthetics but also optimize space utilization, promote efficiency, and meet building codes and regulations. Collaborating with Maxx Designers allows for harmonious integration of aesthetics and functionality in your commercial space.

Streamlined Design-Construction Integration

Collaborating with Maxx Designers offers the advantage of a seamless integration between the design and construction phases. As a partner company of Maxx Builders, Maxx Designers work closely with the construction team, ensuring that the design is practical, constructible, and aligned with the project's budget and schedule. Their collaborative approach streamlines the transition from design to construction, minimizing potential conflicts and delays.

Expertise in Value Engineering

Value engineering is a process that maximizes the value of a project by balancing cost, quality, and performance. Maxx Designers bring their expertise in value engineering, helping you make informed decisions that optimize project costs without compromising on quality or functionality. Their focus on value engineering ensures that your project achieves the desired outcomes within your budget constraints.

5.2

5.2 DEVELOPING A DESIGN CONCEPT

Introduction

The development of a well-defined design concept is a critical phase in architectural planning. It sets the stage for the entire project, capturing your aspirations, brand identity, and functional requirements. Collaborating closely with Maxx Designers in this process ensures the seamless integration of your vision into a tangible architectural design. In this section, we will explore the importance of a well-developed design concept, the iterative design process, and how Maxx Designers collaborate with you to bring your vision to life.

Iterative Design Process

The design process involves an iterative approach, with ongoing collaboration and feedback between you and Maxx Designers. Through a series of consultations, design workshops, and presentations, Maxx Designers refine and develop the concept based on your input. This iterative process ensures that the design aligns with your vision, functional requirements, and project constraints.

Incorporating Aesthetics and Functionality

Maxx Designers understand the importance of striking a balance between aesthetics and functionality in architectural planning. They aim to create designs that not only reflect your brand identity and capture your desired aesthetic preferences but also optimize space utilization, promote efficiency, and comply with building codes and regulations. Collaborating with Maxx Designers ensures a harmonious integration of aesthetics and functionality in your commercial space.

5.3

5.3 ACHIEVING A COHESIVE ARCHITECTURAL DESIGN WITH MAXX DESIGNERS

Introduction:

A cohesive architectural design seamlessly integrates various elements, including spatial layout, structural integrity, and aesthetic considerations. Collaborating with Maxx Designers ensures the development of a design that embodies your vision while adhering to technical requirements and regulations. In this section, we will explore the significance of a cohesive architectural design, the considerations involved, and how Maxx Designers contribute to its realization.

Space Utilization and Efficiency:

Maxx Designers excel in optimizing space utilization to maximize efficiency and functionality. They meticulously plan the spatial layout, considering traffic flow, accessibility, and ergonomic principles. By collaborating closely with Maxx Designers, you can ensure that every square footage of your commercial space is utilized effectively, leading to improved workflow and enhanced user experience.

Compliance with Building Codes and Regulations

Adhering to building codes and regulations is a crucial aspect of architectural planning. Maxx Designers are well-versed in local building codes and regulations, ensuring that the design meets all the necessary requirements. By collaborating with Maxx Designers, you can rest assured that your commercial space will comply with safety, accessibility, and structural standards.

Conclusion:

In this chapter, we explored the critical topics of estimating construction costs and financing options in commercial construction planning.

Accurately estimating costs and securing appropriate financing are essential for successful project execution. Collaborating with Maxx Builders throughout the process allows you to leverage their expertise, industry connections, and financial insights to optimize your budget allocation and ensure a well-planned and financially sound project. In the following chapters, we will delve into other crucial aspects of commercial construction planning, such as site selection, architectural design, and pre-construction documentation, further enhancing the potential of your project.



CHAPTER 6

CHAPTER 6 PROCURING PERMITS & LICENSES

https://drive.google.com/file/d/1Q3T0WYw60Kq8RS1T1X0Z2NR1omK2d0UkUjGhQdWDR1dJwv7t6s4/view

Signature _____ Date _____

NUMBER IN HOUSEHOLD _____

STATUS: No Permanent Housing (homeless) _____
and were displaced, what was the reason? _____
as from the VA? _____
by the VA? _____

MARRITAL STATUS: _____
Domestic Partner _____
Married _____
Divorced _____
Widowed _____

EMPLOYMENT: _____
Employed full-time student _____
Unemployed _____
Retired _____
Unknown _____

FARMWORKER: _____
Migrant _____
Seasonal _____
Neither _____

MONTHLY INCOME _____

OCCUPATION: _____
Current _____
Previous _____
Severely _____
Hearing _____
Impaired _____

LEARN BEST BY: _____

PRIMARY LANGUAGE: _____
English _____
Spanish _____
Sign Language _____
Other _____

Emergency Phone: _____
Social Security Number _____
DOL# _____

White _____
Declined _____
Unknown _____

Single _____
Head of household _____
Decided _____



MAXX BUILDERS

Item	Unit Price	Line Total
1	420.00	4,200.00
2	199.99	2,399.98
3	200.00	1,000.00
4	255.52	817.6
5	500.00	5,000.00
SUBTOTAL		13,407.58
PST 6.50%		881.70
GST 3.20%		429.04
SHIPPING & HANDLING		14.00
TOTAL PAID		14,736.32
TOTAL DUE		14,736.32

To: _____
Name: 1 _____
Address: 1 _____
City/State 1 SH1212345
SA _____

DATE: November 17, 2006
INVOICE # INV1000

6.1

6.1 PROCURING PERMITS & LICENSES

Introduction

Obtaining the necessary permits and licenses is a critical step in the commercial construction process. Compliance with building codes and regulations ensures the safety and legality of your project. In this chapter, we will delve into the process of procuring permits and licenses, the importance of regulatory compliance, and how Maxx Builders can assist you in navigating this complex process.

Understanding Permitting Requirements:

Each jurisdiction has its own set of permitting requirements. These requirements may include building permits, electrical permits, plumbing permits, mechanical permits, and other specialized permits depending on the scope of your project. Maxx Builders can guide you through the process, ensuring that you have a comprehensive understanding of the permits required for your specific project.

Collaboration with Regulatory Authorities:

Collaboration with regulatory authorities is crucial for a smooth permitting process. Maxx Builders, with their experience and established relationships with local authorities, can facilitate this collaboration on your behalf. They can assist in preparing the necessary documentation, submitting permit applications, and coordinating with regulatory agencies to ensure compliance with all requirements.

6.2

6.2 PREPARING DETAILED CONSTRUCTION DOCUMENTS

Introduction

Comprehensive and accurate construction documents are vital for a successful commercial construction project. These documents serve as a roadmap for the construction team and provide detailed instructions for the execution of the project. In this section, we will explore the importance of preparing detailed construction documents, the key components of these documents, and how Maxx Builders can assist you in this crucial phase.

Components of Construction Documents:

Construction documents typically include architectural drawings, such as floor plans, elevations, and sections, which illustrate the layout and design intent of the project. They also include engineering plans, such as structural drawings, electrical plans, plumbing plans, and HVAC (heating, ventilation, and air conditioning) designs, which provide technical details and specifications. In collaboration with Maxx Builders, the design team will develop these documents to ensure they meet the necessary standards and regulations.

Accuracy and Clarity

Accuracy and clarity are crucial when preparing construction documents. These documents must be precise and provide clear instructions to avoid confusion during the construction phase. Maxx Builders and the design team work closely to review and revise the construction documents, ensuring that they accurately represent the design intent, incorporate any changes or modifications, and meet all regulatory requirements.

6.3

6.3 ENSURING COMPLIANCE WITH BUILDING CODES & REGULATIONS

Introduction

Compliance with building codes and regulations is a fundamental aspect of commercial construction. These codes and regulations are established to safeguard public safety, structural integrity, and accessibility standards. In this section, we will explore the importance of compliance, the role of Maxx Builders in ensuring adherence to building codes and regulations, and the benefits of a compliant construction project.

Code Review and Compliance Assessment

Maxx Builders conducts a thorough review of the construction documents to assess compliance with building codes and regulations. This review includes evaluating structural design, fire safety measures, accessibility requirements, energy efficiency standards, and other relevant aspects. By identifying any potential non-compliance issues early in the process, Maxx Builders can address them proactively to avoid delays and costly modifications during construction.

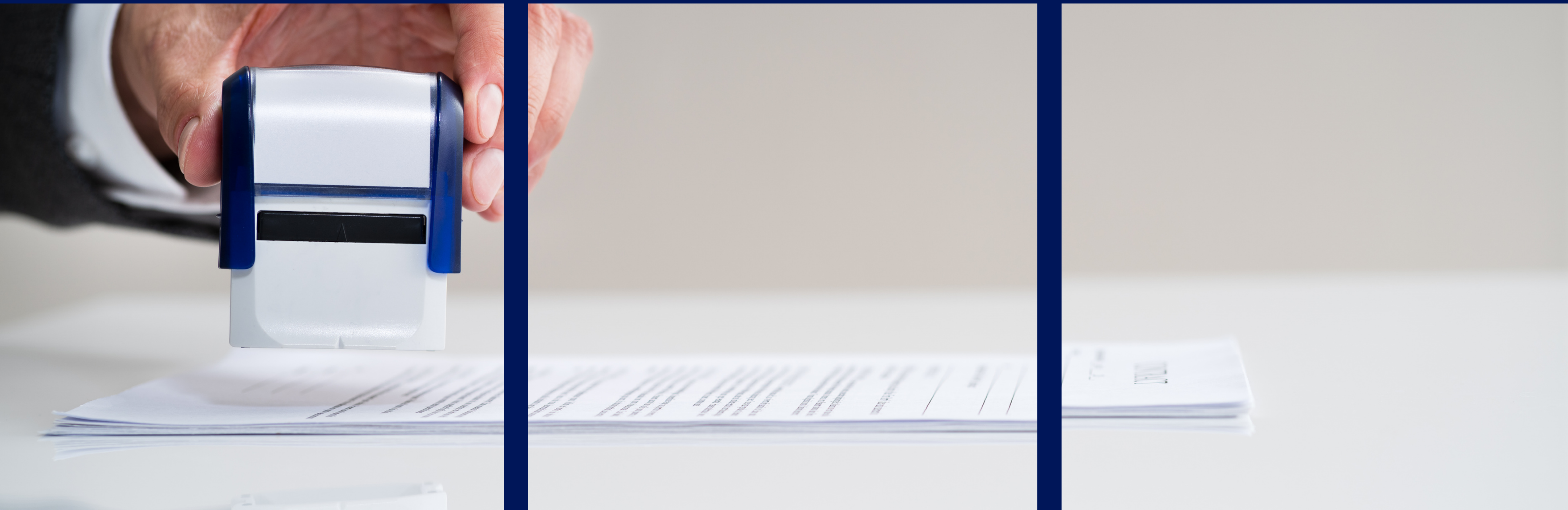
Collaboration with Regulatory Authorities

Collaboration with regulatory authorities is essential to ensure compliance with building codes and regulations. Maxx Builders serves as a liaison between you and the regulatory agencies, facilitating communication and addressing any inquiries or requests for modifications. They will coordinate inspections, permit approvals, and other necessary interactions to ensure a smooth compliance process.

Conclusion:

Procuring permits and licenses, preparing detailed construction documents, and ensuring compliance with building codes and regulations are vital steps in the pre-construction phase.

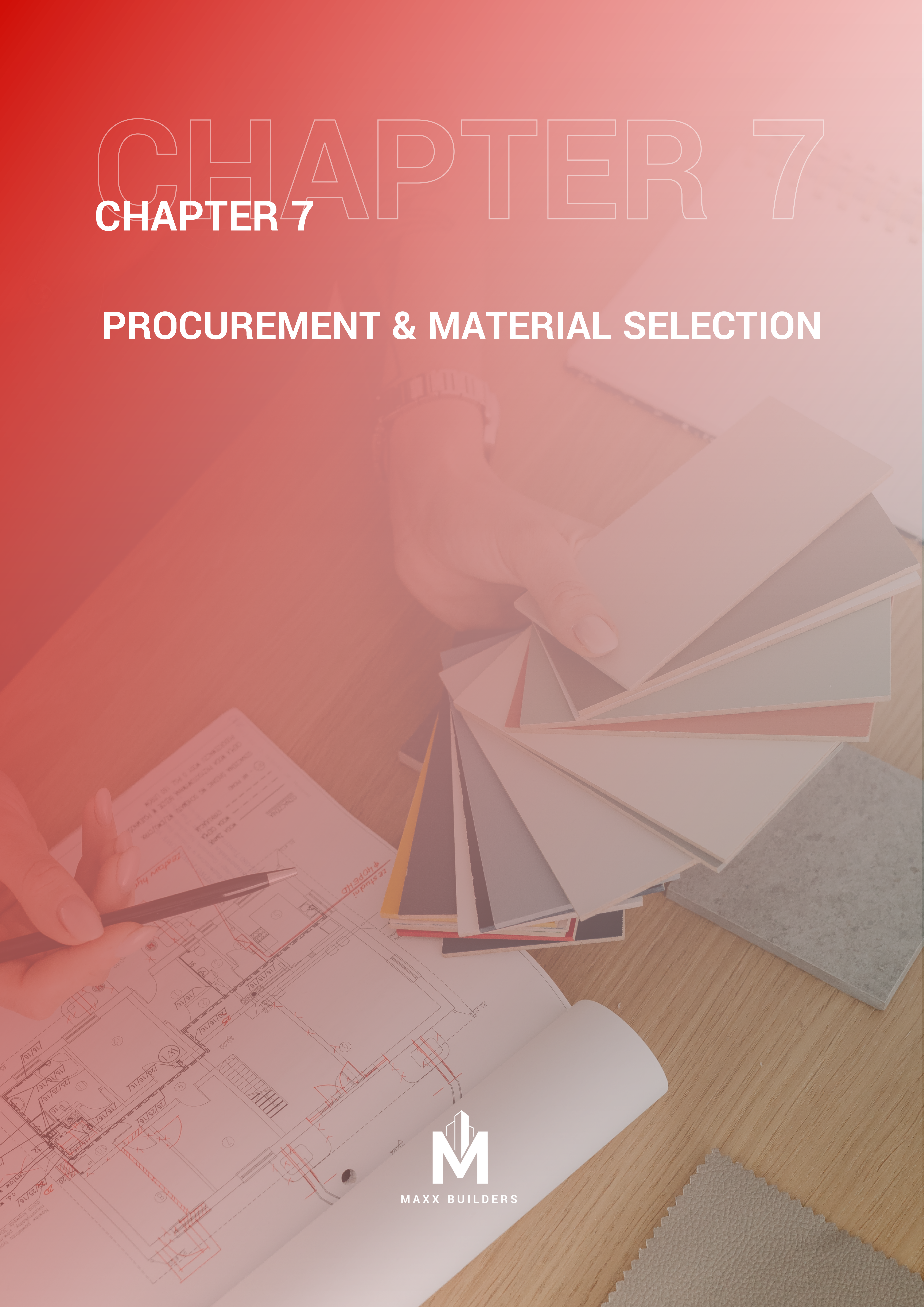
Collaborating closely with Maxx Builders and the design team ensures that these aspects are handled effectively, minimizing delays and ensuring regulatory compliance. In the following chapters, we will explore other crucial aspects of commercial construction planning, such as procurement and material selection, construction scheduling, and project management, further enhancing the potential of your project.



CHAPTER 7

CHAPTER 7

PROCUREMENT & MATERIAL SELECTION



MAXX BUILDERS

7.1

7.1 IDENTIFYING THE RIGHT MATERIALS & SUPPLIERS

Introduction

The procurement and selection of materials for your commercial construction project are crucial to its success. The quality and suitability of materials directly impact the durability, functionality, and aesthetics of the final structure. In this chapter, we will explore the process of identifying the right materials and suppliers, the importance of material selection.

Material Research and Evaluation:

Thorough research and evaluation of materials are necessary to identify the most suitable options for your project. Consider factors such as durability, sustainability, cost-effectiveness, maintenance requirements, and aesthetic appeal. Maxx Builders can assist you in conducting this research, providing insights into the characteristics and performance of various materials available in the market.

Collaboration with Suppliers

Collaboration with reliable and reputable suppliers is crucial to procure high-quality materials for your commercial construction project. Maxx Builders has established relationships with trusted suppliers and can leverage their network to source materials that meet your project specifications. They will coordinate with suppliers, obtain quotes, and ensure timely delivery of materials to the construction site.

Budget Considerations

When selecting materials, it is essential to consider your project budget. Collaborate closely with Maxx Builders to establish a clear understanding of your budget constraints. They can provide guidance on cost-effective material options that meet your project requirements without compromising quality. By striking the right balance between cost and quality, you can ensure that your project remains financially viable.

7.2

7.2 MANAGING THE PROCUREMENT PROCESS

Introduction

Efficient management of the procurement process is crucial to ensure the timely acquisition of materials and equipment for your commercial construction project. In this section, we will explore the steps involved in the procurement process, the importance of effective management, and how Maxx Builders streamlines this process.

Establishing a Procurement Strategy

Collaborate with Maxx Builders to develop a comprehensive procurement strategy that aligns with your project goals. This strategy includes determining the required materials, establishing procurement timelines, identifying potential suppliers, and outlining the evaluation criteria for selecting suppliers. Maxx Builders' expertise in procurement management enables us to develop an effective strategy tailored to your project's specific needs.

Supplier Selection and Evaluation

Selecting reliable suppliers is crucial to ensure the quality and timely delivery of materials. Maxx Builders can assist in the supplier selection process by evaluating supplier capabilities, reputation, and track record. They will assess factors such as supplier reliability, financial stability, quality assurance measures, and adherence to industry standards. By collaborating with Maxx Builders, you can be confident in the selection of reputable suppliers.

Contract Negotiation and Documentation:

Once suppliers are selected, contract negotiation and documentation play a vital role in formalizing the procurement agreements. Collaborate with Maxx Builders to ensure that all necessary contracts are in place, clearly outlining the terms and conditions, delivery schedules, payment terms, and quality requirements. Maxx Builders contract negotiation is to protect your interests and establish a solid foundation for successful procurement.

Timely Procurement and Delivery

Efficient procurement and timely delivery of materials are essential to avoid project delays. Maxx Builders will closely monitor the procurement process, ensuring that orders are placed in a timely manner and deliveries are coordinated to align with the construction schedule. They will work in collaboration with suppliers to address any potential issues or delays, ensuring that materials are available when needed.

Conclusion:

Efficient procurement and material selection are crucial aspects of commercial construction planning.

By collaborating with Maxx Builders, you can benefit from their expertise in identifying the right materials, managing the procurement process, and ensuring timely delivery. Effective procurement management saves time and resources, contributing to the overall success of your commercial construction project. In the following chapters, we will explore other crucial aspects of commercial construction planning, such as construction scheduling, project management, and safety and risk management, further enhancing the potential of your project.



CHAPTER 8

CHAPTER 8

CREATING A REALISTIC CONSTRUCTION SCHEDULE SCHEDULE



MAXX BUILDERS

8.1

8.1 CREATING A REALISTIC CONSTRUCTION SCHEDULE

Introduction

Developing a comprehensive construction schedule is essential for managing the timeline and ensuring the timely completion of your commercial construction project. A well-structured schedule enables efficient resource allocation, coordination of activities, and effective project management. In this chapter, we will explore the importance of creating a realistic construction schedule, the key elements involved, and how Maxx Builders can assist you in developing and managing the schedule.

Scope Definition and Work Breakdown

Defining the scope of work is the first step in creating a construction schedule. Collaborate with Maxx Builders to clearly define the tasks and activities required to complete the project. Break down the work into manageable components, creating a work breakdown structure (WBS) that provides a hierarchical representation of the project's deliverables. This WBS forms the basis for developing the construction schedule.

Estimating Activity Durations

Accurate estimation of activity durations is crucial for creating a realistic construction schedule. Collaborate with Maxx Builders to leverage their expertise and historical data to estimate the time required for each activity. Factors such as resource availability, dependencies, and external influences should be considered when estimating durations. Maxx Builders can assist in identifying potential risks and incorporating appropriate buffers in the schedule to account for uncertainties.

Sequencing and Dependencies

Establishing the correct sequence of activities and identifying their dependencies is essential for developing an effective construction schedule. Collaborate with Maxx Builders to analyze the relationships between tasks, ensuring that activities are logically sequenced and that dependencies are properly identified. This allows for efficient resource allocation and minimizes delays caused by waiting for predecessor activities to be completed.

8.2

8.2 MANAGING PROJECT MILESTONES AND DEADLINES

Introduction

Effective management of project milestones and deadlines is crucial for monitoring progress and ensuring timely completion of your commercial construction project. Milestones serve as key checkpoints throughout the project, while deadlines provide a sense of urgency and help maintain project momentum. In this section, we will explore the importance of managing project milestones and deadlines, how they are established, and how Maxx Builders can assist in their management.

Establishing Milestones

Collaborate with Maxx Builders to establish project milestones based on the project scope, schedule, and key deliverables. Milestones should be specific, measurable, attainable, relevant, and time-bound (SMART). They should represent critical points in the project timeline, such as completion of major construction phases, inspections, or client approvals. By defining milestones, you can track progress and celebrate key achievements throughout the project.

Setting Deadlines

Deadlines provide a sense of urgency and ensure that tasks and activities are completed within a specified timeframe. Collaborate with Maxx Builders to set realistic deadlines for each milestone and activity. Deadlines should consider the overall project schedule, resource availability, and potential risks. By setting clear deadlines, you can maintain project momentum and avoid unnecessary delays.

Monitoring and Adjusting

Effective project management involves monitoring progress against milestones and deadlines. Collaborate closely with Maxx Builders to track project performance, identify any deviations, and take appropriate corrective actions. Regular communication and progress updates will allow for timely adjustments, ensuring that the project stays on schedule.

8.3

8.3 COLLABORATING WITH MAXX BUILDERS' PROJECT MANAGERS

Introduction

Collaboration with experienced project managers from Maxx Builders is essential for the successful execution of your commercial construction project. Project managers oversee all aspects of the project, ensuring coordination, effective communication, and timely resolution of issues. In this section, we will explore the role of Maxx Builders' project managers, their contributions to the construction process, and how their collaboration can benefit your project.

Communication and Coordination

Project managers act as a central point of contact, facilitating communication and coordination among all project stakeholders. They ensure that information flows smoothly between you, the design team, subcontractors, suppliers, and other parties involved in the project. Collaborating with Maxx Builders' project managers ensures that everyone is aligned, issues are promptly addressed, and decisions are made in a timely manner.



Conclusion:

Creating a realistic construction schedule, managing project milestones and deadlines, and collaborating with Maxx Builders' project managers are essential aspects of commercial construction planning.

By engaging in effective project management, you can ensure the timely completion of your project while maintaining quality and adherence to the schedule. Collaboration with Maxx Builders throughout the process allows for seamless coordination, efficient decision-making, and successful project execution. In the following chapters, we will explore other crucial aspects of commercial construction planning, such as safety and risk management, communication and collaboration, and post-construction evaluation and maintenance.



CHAPTER 9

CHAPTER 9

SAFETY & RISK MANAGEMENT



MAXX BUILDERS

9.1

9.1 IMPLEMENTING EFFECTIVE SAFETY PROTOCOLS

Introduction

Safety is of paramount importance in any commercial construction project. Implementing effective safety protocols is crucial to protect the well-being of workers, mitigate risks, and ensure a secure construction environment. In this chapter, we will explore the significance of safety protocols, the key components of a comprehensive safety program, and how Maxx Builders prioritizes safety in every construction project.

Risk Assessment and Hazard Identification

A thorough risk assessment and hazard identification process is essential to identify potential dangers and implement appropriate safety measures. Maxx Builders conducts comprehensive site evaluations, identifying potential risks and hazards. They utilize their expertise to develop risk mitigation strategies and implement necessary safety protocols to address identified risks.

Safety Training and Education

Providing adequate safety training and education to all workers is vital to ensure their competence in recognizing and managing potential risks. Maxx Builders emphasizes regular safety training sessions and workshops for their workforce. These training programs cover topics such as hazard recognition, personal protective equipment (PPE) usage, emergency response procedures, and best practices for working safely in a construction environment.

9.2

9.2 IDENTIFYING & MITIGATING CONSTRUCTION RISKS

Introduction

Construction projects inherently involve various risks that can impact the project's timeline, budget, and overall success. Proactive risk management is crucial to identify and mitigate potential risks before they escalate. In this section, we will explore the importance of risk management, the process of identifying and analyzing construction risks, and how Maxx Builders incorporates risk management practices into their projects.

Risk Identification and Assessment

Maxx Builders conducts a comprehensive risk identification process, evaluating the unique risks associated with each project. They consider various factors, including site conditions, project complexity, weather conditions, and regulatory requirements. By identifying potential risks early on, Maxx Builders can develop strategies to mitigate them and prevent potential setbacks.

Risk Mitigation and Contingency Planning

Once risks are identified, Maxx Builders develops risk mitigation strategies and contingency plans to minimize their impact. This may include implementing additional safety measures, enhancing project monitoring and supervision, or creating alternative approaches to address potential risks. Through proactive risk management, Maxx Builders ensures that your project remains on track, even in the face of unforeseen challenges.

9.3

9.3 ENSURING COMPLIANCE WITH OCCUPATIONAL HEALTH & SAFETY REGULATIONS

Introduction:

Compliance with occupational health and safety regulations is not only a legal requirement but also crucial for safeguarding the well-being of workers. Adhering to these regulations ensures a safe working environment and minimizes the risk of accidents and injuries. In this section, we will explore the importance of compliance with occupational health and safety regulations, the role of Maxx Builders in ensuring compliance, and the benefits it brings to your construction project.

Understanding and Adhering to Regulations

Maxx Builders is well-versed in the local occupational health and safety regulations governing construction projects. They stay up-to-date with evolving regulations, ensuring that their construction practices align with the latest safety standards. By collaborating with Maxx Builders, you can be confident that your project meets all the necessary requirements to create a secure work environment.

Proactive Safety Measures

Maxx Builders implements proactive safety measures to ensure compliance with occupational health and safety regulations. This includes providing appropriate personal protective equipment (PPE), conducting regular safety inspections, and promoting a culture of safety among workers. By prioritizing safety, Maxx Builders creates a secure environment that reduces the risk of accidents and promotes worker well-being.



Conclusion:

Safety and risk management are crucial aspects of commercial construction planning.

Implementing effective safety protocols, identifying and mitigating construction risks, and ensuring compliance with occupational health and safety regulations are vital to protect workers and minimize project disruptions. Collaborating with Maxx Builders ensures that safety is prioritized throughout the construction process, and proactive risk management strategies are in place. In the following chapters, we will explore other crucial aspects of commercial construction planning, such as communication and collaboration, post-construction evaluation, and maintenance.

CHAPTER 10

CHAPTER 10

COMMUNICATION & COLLABORATION



MAXX BUILDERS

10.1

10.1 EFFECTIVE COMMUNICATION CHANNELS

Introduction

Effective communication is the cornerstone of successful commercial construction projects. Clear and timely communication channels ensure that all stakeholders are informed, aligned, and able to make informed decisions. In this chapter, we will explore the importance of effective communication channels, the key elements of a robust communication plan, and how Maxx Builders facilitates transparent and efficient communication throughout the project lifecycle.

Stakeholder Identification and Communication Needs

Identifying project stakeholders and understanding their communication needs is vital for tailoring the communication approach. Maxx Builders works closely with you to identify key stakeholders, including clients, design professionals, subcontractors, and regulatory authorities. By understanding the unique communication requirements of each stakeholder, Maxx Builders can develop a communication plan that meets their needs.

Clear and Timely Information Dissemination

Maxx Builders prioritizes clear and timely information dissemination to ensure that all stakeholders have access to the relevant project information. This includes regular project updates, meeting minutes, and documentation distribution. By implementing effective communication channels, Maxx Builders ensures that everyone is well-informed, reducing the likelihood of miscommunication and delays.

10.2

10.2 REGULAR PROJECT UPDATES & MEETINGS

Introduction

Regular project updates and meetings provide a platform for collaboration, information exchange, and decision-making. They allow stakeholders to discuss project progress, address challenges, and align their efforts. In this section, we will explore the importance of regular project updates and meetings, how they enhance collaboration, and how Maxx Builders facilitates these communication channels.

Structured Meeting Agendas

Maxx Builders takes a structured approach to project meetings, developing clear agendas that outline the topics to be discussed and the desired outcomes. This ensures that meetings are focused, productive, and address the key concerns of all stakeholders. By adhering to a structured agenda, stakeholders can make efficient use of their time and contribute meaningfully to the project discussions.

Information Sharing and Decision-Making

Regular project updates and meetings provide an opportunity for stakeholders to share information, discuss project challenges, and make informed decisions. Maxx Builders facilitates effective information sharing, ensuring that all stakeholders have access to the necessary project documentation, reports, and updates. This enables stakeholders to make well-informed decisions that align with the project objectives.

10.3

10.3 BUILDING STRONG RELATIONSHIPS WITH MAXX BUILDERS' TEAM

Introduction

Strong relationships built on trust and collaboration are essential for the success of a commercial construction project. Collaborating closely with Maxx Builders' team promotes a culture of partnership, ensuring effective communication, efficient problem-solving, and a shared commitment to project success. In this section, we will explore the importance of building strong relationships, the benefits it brings to the project, and how Maxx Builders fosters collaborative partnerships.

Partnership Approach

Maxx Builders adopts a partnership approach, considering their clients as integral team members. They actively seek input, encourage open dialogue, and value collaborative decision-making. By fostering a partnership mindset, Maxx Builders establishes a foundation of trust and cooperation throughout the construction process.

Collaborative Problem-Solving

Collaborating closely with Maxx Builders' team encourages collaborative problem-solving. When challenges arise, all stakeholders work together to identify innovative solutions and make timely decisions. This collaborative approach ensures that issues are addressed efficiently, minimizing disruptions and keeping the project on track.



Conclusion:

Effective communication and collaboration are key to the success of any commercial construction project.

Establishing clear communication channels, facilitating regular project updates and meetings, and building strong relationships with Maxx Builders' team ensures that stakeholders are informed, aligned, and working together towards project success. Collaborating with Maxx Builders promotes a culture of partnership, trust, and effective problem-solving. In the following chapters, we will explore other crucial aspects of commercial construction planning, such as post-construction evaluation and maintenance, and the role of Maxx Builders.

CHAPTER 11

CHAPTER 11

POST-CONSTRUCTION EVALUATION & MAINTENANCE



MAXX BUILDERS

Introduction:

Chapter 11 delves into the crucial phase of post-construction evaluation and maintenance. This phase marks the completion of the commercial construction project, but it is not the end of the journey. Instead, it is the beginning of a new phase focused on ensuring the long-term functionality, durability, and satisfaction with the constructed space. In this chapter, we will guide you through the essential steps of conducting a final inspection, addressing deficiencies and warranty issues, and implementing an ongoing maintenance plan. With Maxx Builders as your trusted partner, you can be confident in the post-construction evaluation and maintenance processes, ensuring the continued success of your commercial space.



11.1 CONDUCTING A FINAL INSPECTION

Introduction

Before officially concluding the commercial construction project, it is vital to conduct a thorough final inspection. This inspection serves as a comprehensive assessment of the completed work, ensuring that it meets the highest standards of quality, functionality, and compliance. In this section, we will explore the importance of conducting a final inspection, the key elements to evaluate, and how Maxx Builders ensures a meticulous and rigorous inspection process.

Comprehensive Evaluation

During the final inspection, Maxx Builders meticulously evaluates various aspects of the completed project. This includes reviewing the structural integrity, assessing the functionality of systems and equipment, examining finishes and aesthetics, and confirming compliance with all contractual obligations and regulatory standards. The objective is to identify any deficiencies or areas requiring attention before the handover.

Documentation and Reporting

Maxx Builders maintains a detailed record of the final inspection process, documenting findings, and preparing a comprehensive report. This report serves as a valuable reference, capturing the current state of the project and identifying any outstanding issues that need to be addressed. With this documentation in hand, you can confidently proceed to the next steps of post-construction evaluation and maintenance.

11.2

11.2 ADDRESSING DEFICIENCIES AND WARRANTY ISSUES

Introduction

After the final inspection, it is possible that some deficiencies or warranty issues may arise. These can range from minor cosmetic concerns to more significant functional or structural matters. In this section, we will discuss the importance of addressing deficiencies and warranty issues promptly, the process of reporting and resolving them, and how Maxx Builders takes proactive measures to ensure swift resolution.

Deficiency Reporting and Resolution

If any deficiencies or warranty issues are identified during the final inspection or after occupancy, Maxx Builders provides a clear process for reporting and addressing them. This involves documenting the specific concerns, communicating them to the appropriate parties, and developing an action plan for resolution. Maxx Builders takes a proactive approach to address these issues, working diligently to rectify them promptly and effectively.

Warranty Coverage and Support

Maxx Builders stands behind the quality of their work, offering warranty coverage for specific components and systems of the commercial construction project. If any issues covered by the warranty arise, Maxx Builders takes responsibility for resolving them within the agreed-upon terms. This commitment to after-sales support provides you with peace of mind and ensures the long-term functionality and satisfaction with your commercial space.

11.3

11.3 IMPLEMENTING AN ONGOING MAINTENANCE PLAN

Introduction

After the completion of a commercial construction project, proactive and consistent maintenance is essential to preserve the functionality, aesthetics, and value of your investment. In this section, we will discuss the importance of implementing an ongoing maintenance plan, the key elements to consider, and how Maxx Builders assists in developing a customized plan tailored to your specific needs.

Customized Maintenance Strategy

Maxx Builders considers various factors when developing an ongoing maintenance plan, including the specific features of your commercial space, the materials used, and any industry-specific requirements. This customized strategy outlines regular maintenance tasks, periodic inspections, and the recommended schedule for preventive maintenance activities. By adhering to this plan, you can mitigate potential issues, prolong the lifespan of your investment, and minimize unexpected repairs or disruptions.

Partnership for Ongoing Support

Maxx Builders maintains an ongoing partnership with clients, providing continued support and guidance in maintaining your commercial space. They can offer recommendations for reputable service providers, provide resources for proper maintenance techniques, and address any questions or concerns that may arise. This ongoing partnership ensures that your commercial space remains in optimal condition, allowing you to focus on your core business activities with confidence.



Conclusion:

Chapter 11 emphasizes the importance of post-construction evaluation and maintenance in ensuring the long-term success of your commercial space.

By conducting a thorough final inspection, addressing deficiencies and warranty issues promptly, and implementing an ongoing maintenance plan, you can preserve the functionality, aesthetics, and value of your investment. Maxx Builders' commitment to quality, support, and collaboration ensures that you have the necessary guidance and expertise to navigate the post-construction phase successfully.



MAXX BUILDERS

BUILD SMARTER